



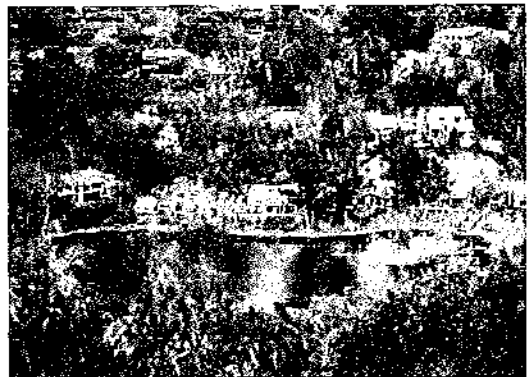
CITY OF  
**LA MESA**  
*JEWEL of the HILLS*



# GENERAL PLAN DRAFT ENVIRONMENTAL IMPACT REPORT

State Clearing House # 2012061053

February 2013



**DRAFT ENVIRONMENTAL IMPACT REPORT**

**LA MESA 2012 GENERAL PLAN**

**State Clearinghouse # 2012061053**

**February 2013**

Lead Agency:  
City of La Mesa  
8130 Allison Avenue  
La Mesa, California 91942  
(619) 667-1188

Consultants to City of La Mesa:  
AECOM  
1420 Kettner Boulevard, Suite 500  
San Diego, CA 92101  
(619) 233-1454

## TABLE OF CONTENTS

<u>Section</u>	<u>Page</u>
LIST OF ACRONYMS AND ABBREVIATIONS .....	ix
EXECUTIVE SUMMARY .....	ES-1
CHAPTER 1.0 – INTRODUCTION .....	1-1
1.1 Purpose of the Program EIR .....	1-1
1.2 Lead and Responsible Agencies .....	1-2
1.3 Scope of this EIR .....	1-2
1.4 Public Review and Participation Process.....	1-3
1.5 Structure and Organization of the Program EIR.....	1-5
1.6 General Approach to Program EIR Analysis.....	1-6
CHAPTER 2.0 – PROJECT DESCRIPTION .....	2-1
2.1 General Plan Background .....	2-1
2.2 Regional Setting and Planning Area .....	2-2
2.3 Project Purpose and Objectives .....	2-2
2.4 Project Characteristics .....	2-5
2.4.1 Land Use and Urban Design Element.....	2-5
2.4.2 Circulation Element .....	2-12
2.4.3 Conservation and Sustainability Element .....	2-17
2.4.4 Recreation and Open Space Element.....	2-17
2.4.5 Historic Preservation Element .....	2-19
2.4.6 Noise Element.....	2-19
2.4.7 Safety Element .....	2-19
2.4.8 Public Services and Facilities Element.....	2-20
2.4.9 Health and Wellness Element .....	2-20
2.4.10 Housing Element.....	2-20
2.4.11 Implementation Program .....	2-21
2.5 Intended Uses of the Program EIR .....	2-21
CHAPTER 3.0 – ENVIRONMENTAL SETTING .....	3-1
3.1 Physical Characteristics of the Planning Area .....	3-1
3.2 Environmental Resources of the Planning Area .....	3-1
3.3 Existing Land Use and Development Pattern .....	3-3
3.4 Existing Transportation Network.....	3-4
3.5 Existing infrastructure, services, and utilities .....	3-4

<u>Section</u>	<u>Page</u>
CHAPTER 4.0 – ENVIRONMENTAL IMPACT ANALYSIS.....	4.0-1
4.0.1 Organization of the Environmental Impact Analysis.....	4.0-1
4.0.2 Terminology used in this Environmental Impact Analysis.....	4.0-3
4.0.3 Project-Level Environmental Documentation for Subsequent Projects .....	4.0-3
4.1 Aesthetics.....	4.1-1
4.1.1 Existing Environmental Setting .....	4.1-1
4.1.2 Regulatory Setting .....	4.1-5
4.1.3 Thresholds for Determining Significance.....	4.1-7
4.1.4 Analysis of Environmental Impacts.....	4.1-7
4.1.5 Mitigation Measure.....	4.1-11
4.1.6 Significance after Mitigation .....	4.1-12
4.2 Air Quality .....	4.2-1
4.2.1 Existing Environmental Setting .....	4.2-1
4.2.2 Regulatory Setting .....	4.2-7
4.2.3 Thresholds for Determining Significance.....	4.2-10
4.2.4 Analysis of Environmental Impacts.....	4.2-12
4.2.5 Mitigation Measures .....	4.2-22
4.2.6 Significance After Mitigation .....	4.2-25
4.3 Biological Resources .....	4.3-1
4.3.1 Existing Environmental Setting.....	4.3-1
4.3.2 Regulatory Framework .....	4.3-11
4.3.3 Thresholds for Determining Significance.....	4.3-17
4.3.4 Analysis of Environmental Impacts.....	4.3-18
4.3.5 Mitigation Measures .....	4.3-22
4.3.6 Significance after Mitigation .....	4.3-22
4.4 Cultural Resources.....	4.4-1
4.4.1 Existing Environmental Setting.....	4.4-1
4.4.2 Regulatory Setting .....	4.4-2
4.4.3 Thresholds of Significance .....	4.4-5
4.4.4 Analysis of Environmental Impacts.....	4.4-5
4.4.5 Mitigation Measures .....	4.4-7
4.4.6 Significance after Mitigation .....	4.4-9
4.5 Greenhouse Gas Emissions.....	4.5-1
4.5.1 Existing Environmental Setting.....	4.5-1
4.5.2 Regulatory Setting .....	4.5-5
4.5.3 Thresholds for Determining Significance.....	4.5-12
4.5.4 Analysis of Environmental Impacts.....	4.5-13

<u>Section</u>	<u>Page</u>
4.5.5 Mitigation Measures .....	4.5-19
4.5.6 Significance After Mitigation .....	4.5-20
4.6 Hazards and Hazardous Materials .....	4.6-1
4.6.1 Existing Environmental Setting .....	4.6-1
4.6.2 Regulatory Setting .....	4.6-6
4.6.3 Thresholds for Determining Significance .....	4.6-21
4.6.4 Analysis of Environmental Impacts.....	4.6-22
4.6.5 Mitigation Measures .....	4.6-26
4.6.6 Significance after Mitigation .....	4.6-26
4.7 Hydrology and Water Quality.....	4.7-1
4.7.1 Existing Environmental Setting .....	4.7-1
4.7.2 Regulatory Setting .....	4.7-9
4.7.3 Thresholds for Determining Significance .....	4.7-14
4.7.4 Analysis of Environmental Impacts.....	4.7-15
4.7.5 Mitigation Measures .....	4.7-20
4.7.6 Significance after Mitigation .....	4.7-20
4.8 Land Use .....	4.8-1
4.8.1 Existing Environmental Setting .....	4.8-1
4.8.2 Regulatory Setting .....	4.8-8
4.8.3 Thresholds for Determining Significance .....	4.8-15
4.8.4 Analysis of Environmental Impacts.....	4.8-15
4.8.5 Mitigation Measures .....	4.8-20
4.8.6 Significance After Mitigation .....	4.8-20
4.9 Noise .....	4.9-1
4.9.1 Existing Environmental Setting .....	4.9-1
4.9.2 Regulatory Setting .....	4.9-12
4.9.3 Thresholds for Determining Significance .....	4.9-19
4.9.4 Analysis of Environmental Impacts.....	4.9-19
4.9.5 Mitigation Measures .....	4.9-28
4.9.6 Significance after Mitigation .....	4.9-31
4.10 Paleontological Resources .....	4.10-1
4.10.1 Existing Environmental Setting .....	4.10-1
4.10.2 Regulatory Setting .....	4.10-6
4.10.3 Thresholds for Determining Significance .....	4.10-7
4.10.4 Analysis of Environmental Impacts.....	4.10-7
4.10.5 Mitigation Measures .....	4.10-7
4.10.6 Significance after Mitigation .....	4.10-8

<u>Section</u>	<u>Page</u>
4.11 Population and Housing.....	4.11-1
4.11.1 Existing Environmental Setting.....	4.11-1
4.11.2 Regulatory Setting.....	4.11-2
4.11.3 Thresholds for Determining Significance.....	4.11-4
4.11.4 Analysis of Environmental Impacts.....	4.11-4
4.11.5 Mitigation Measures.....	4.11-6
4.11.6 Significance after Mitigation.....	4.11-6
4.12 Public Services, Utilities, and Energy.....	4.12-1
4.12.1 Existing Environmental Setting.....	4.12-1
4.12.2 Regulatory Setting.....	4.12-12
4.12.3 Thresholds for Determining Significance.....	4.12-19
4.12.4 Analysis of Environmental Impacts.....	4.12-20
4.12.5 Mitigation Measures.....	4.12-31
4.12.6 Significance after Mitigation.....	4.12-31
4.13 Transportation and Traffic.....	4.13-1
4.13.1 Existing Environmental Setting.....	4.13-1
4.13.2 Regulatory Setting.....	4.13-18
4.13.3 Thresholds for Determining Significance.....	4.13-22
4.13.4 Analysis of Environmental Impacts.....	4.13-23
4.13.5 Mitigation Measures.....	4.13-28
4.13.6 Significance after Mitigation.....	4.13-28
CHAPTER 5.0 – ANALYSIS OF LONG-TERM EFFECTS.....	5-1
5.1 Maximum Theoretical Build-out Scenario.....	5-1
5.2 Cumulative Impacts.....	5-9
CHAPTER 6.0 – ALTERNATIVES.....	6-1
6.1 Alternatives Considered But Rejected.....	6-3
6.2 Alternative 1: No Project/Existing General Plan Alternative.....	6-4
6.3 Alternative 2: Extensive Transportation demand Management Alternative.....	6-10
6.4 Alternative 3: Reduced Grossmont Specific Plan Alternative.....	6-18
CHAPTER 7.0 – OTHER CEQA CONSIDERATIONS.....	7-1
7.1 Growth-inducing Impacts.....	7-1
7.2 Significant Irreversible Environmental Changes.....	7-2
7.3 Summary of Impact Conclusions.....	7-3
CHAPTER 8.0 – REFERENCES.....	8-1
CHAPTER 9.0 – PREPARERS OF THE ENVIRONMENTAL DOCUMENT.....	9-1

**LIST OF APPENDICES**

Appendix A	Notice of Preparation, Initial Study, and NOP Comment Letters
Appendix B	Air Quality and Greenhouse Gas Emissions Model Outputs
Appendix C	Greenhouse Gas Technical Report
Appendix D	Noise Technical Report
Appendix E	Paleontological Resources Report
Appendix F	Traffic Impact Report

**LIST OF FIGURES**

<u>Figure</u>	<u>Page</u>
2-1 Vicinity Map .....	2-3
2-2 Planned Land Use .....	2-7
2-3 Opportunity Sites .....	2-8
2-4 Land Use Designation Changes .....	2-9
2-5 Circulation Plan .....	2-14
2-6 Sidewalk Masterplan.....	2-15
2-7 Bicycle Facilities Plan .....	2-16
2-8 Transit Services.....	2-18
4.1-1 Topography .....	4.1-2
4.1-2 Scenic Resources .....	4.1-3
4.1-3 Visually Sensitive Areas .....	4.1-4
4.3-1 Vegetation.....	4.3-2
4.3-2 Watersheds and Stormwater Drainage Basins .....	4.3-12
4.4-1 Historic Resources .....	4.4-3
4.5-1 California’s Greenhouse Gas Emissions by Economic Sector (2009) .....	4.5-4
4.5-2 San Diego County’s Greenhouse Gas Emissions by Economic Sector (2006) .....	4.5-4
4.6-1 Montgomery Field Compatibility Map.....	4.6-7
4.6-2 Gillespie Field Compatibility Map .....	4.6-8
4.7-1 Flood Hazard Areas .....	4.7-8
4.8-1 Neighborhoods.....	4.8-2
4.8-2 Existing Land Use.....	4.8-3
4.8-3 Existing Land Uses by Area .....	4.8-4
4.8-4 Specific Plans.....	4.8-6
4.9-1 Noise Measurement Locations.....	4.9-7
4.9-2 2030 Projected Noise Contours .....	4.9-27
4.12-1 Elementary and Middle School Districts .....	4.12-6
4.12-2 High School Districts.....	4.12-7
4.12-3 Sewer Drainage Basins .....	4.12-11
4.13-1 Study Roadway Segments .....	4.13-3
4.13-2 Existing Conditions .....	4.13-11
4.13-3 Future 2035 Conditions .....	4.13-25



## LIST OF TABLES

<u>Table</u>	<u>Page</u>
ES-1	Summary of Environmental Significance Conclusions for the 2012 General Plan... ES-3
ES-2	Comparison of Impacts of Alternatives to the 2012 General Plan ..... ES-5
ES-3	Summary of Environmental Impacts and Mitigation Measures for the 2012 General Plan..... ES-6
2-1	Expected Growth in La Mesa ..... 2-6
2-2	2012 General Plan Land Use Designation Changes ..... 2-12
2-3	Summary of Street Classifications..... 2-13
4.2-1	National and California Ambient Air Quality Standards..... 4.2-3
4.2-2	Ambient Air Quality Summary – El Cajon Monitoring Station..... 4.2-8
4.2-3	Regional Pollutant Emissions Screening Level Thresholds of Significance ..... 4.2-12
4.2-4	Summary of Modeled Construction Emissions ..... 4.2-15
4.2-5	Summary of Modeled Operational Emissions of Criteria Air Pollutants and Precursors..... 4.2-16
4.3-1	Special-Status Species Known to Occur Within or in the Vicinity of the Planning Area ..... 4.3-8
4.5-1	La Mesa 2005 GHG Inventory ..... 4.5-5
4.5-2	Construction-Related Greenhouse Gas Emissions ..... 4.5-14
4.5-3	2005, 2020, and 2035 Operational Greenhouse Gas Emissions Summary ..... 4.5-15
4.5-4	2005, 2020, and 2035 Greenhouse Gas Emissions Summary with Mitigation Measures ..... 4.5-16
4.6-1	Cortese List Sites within the City of La Mesa ..... 4.6-3
4.6-2	Open Cortese List Sites and Status ..... 4.6-3
4.7-1	303(d) Listed Waterbodies in the City of La Mesa ..... 4.7-5
4.7-2	Beneficial Uses for Groundwater in the City of La Mesa ..... 4.7-6
4.8-1	2012 General Plan Land Use Designation Changes ..... 4.8-5
4.8-2	2050 RTP/SCS: SCS Implementing Actions and La Mesa General Plan ..... 4.8-18
4.9-1	Typical Noise Levels ..... 4.9-2
4.9-2	Short-Term Noise Level Measurements ..... 4.9-6
4.9-3	Long-Term Noise Level Measurements LT1 ..... 4.9-8
4.9-4	Long-Term Noise Level Measurement LT2..... 4.9-9
4.9-5	Federal and California State Traffic Noise Abatement Criteria ..... 4.9-14
4.9-6	State of California Land Use Compatibility Guidelines..... 4.9-15
4.9-7	Significant Change in Ambient Noise Levels..... 4.9-16
4.9-8	City of La Mesa Municipal Code Ambient Base Noise Levels..... 4.9-18
4.9-9	Representative Vibration Source Levels for Construction Equipment..... 4.9-22

<u>Table</u>	<u>Page</u>
4.9-10 Construction Equipment Noise Levels .....	4.9-25
4.10-1 Previously Recorded Paleontological Localities within 1 Mile of the City of La Mesa.....	4.10-3
4.11-1 City of La Mesa Population and Housing Growth 2012 to 2035 .....	4.11-1
4.11-2 Change in Housing Stock Composition 2012 to 2035.....	4.11-2
4.12-1 Heartland Fire and Rescue Calls for Service Events 2011 .....	4.12-3
4.12-2 La Mesa Area School Facilities .....	4.12-5
4.12-3 City of La Mesa Population and Housing Growth 2012 through 2035 .....	4.12-20
4.12-4 Projected Water Supply and Demand in Acre Feet per Year for Normal Water Years, 2015–2035 .....	4.12-24
4.12-5 Projected Water Supply and Demand Acre Feet per Year for Single Dry Water Years, 2015–2035 .....	4.12-24
4.12-6 Projected Water Supply and Demand Acre Feet per Year for Multiple Dry Water Years, 2016–2018 .....	4.12-25
4.12-7 Projected Water Supply and Demand Acre Feet per Year for Multiple Dry Water Years, 2021–2023 .....	4.12-25
4.12-8 Projected Water Supply and Demand Acre Feet per Year for Multiple Dry Water Years, 2026–2028 .....	4.12-25
4.12-9 Projected Water Supply and Demand Acre Feet per Year for Multiple Dry Water Years, 2031–2033 .....	4.12-25
4.12-10 Projected Wastewater Treatment Capacity.....	4.12-26
4.13-1 City of La Mesa Measure of Significant Project Traffic Impacts.....	4.13-8
4.13-2 Daily Roadway Segment Capacity .....	4.13-9
4.13-3 Existing Conditions Roadway ADT Volumes and Levels of Service .....	4.13-10
4.13-4 Existing Transit Services in La Mesa .....	4.13-15
4.13-5 City of La Mesa Existing Class II and III Facilities .....	4.13-16
4.13-6 Future 2035 Conditions Roadway ADT Volumes and Levels of Service.....	4.13-27
5-1 Projected Population Growth and Development .....	5-1
5-2 City of La Mesa and San Diego County Growth Forecast .....	5-11
5-3 Geographic Scope of Cumulative Impacts .....	5-11
6-1 Comparison of Impacts of Alternatives to the 2012 General Plan .....	6-2
6-2 Land Use Designation Changes No Project/Existing General Plan vs. 2012 General Plan.....	6-5
6-3 Comparison of Transportation Demand Management Features of Extensive TDM Alternative vs. 2012 General Plan .....	6-11
7-1 Summary of Environmental Significance Conclusions for the 2012 General Plan.....	7-3

## LIST OF ACRONYMS AND ABBREVIATIONS

AB	Assembly Bill
ADT	average daily traffic
AIA	Airport Influence Area
AICUZ	Air Installations Compatible Use Zone
ALUC	Airport Land Use Commission
ALUCP	Airport Land Use Compatibility Plan
APS	Alternative Planning Strategy
ARB	California Air Resources Board
BACT	best available control technology
BMP	best management practice
CAA	Clean Air Act
CAAA	Clean Air Act Amendments
CAAQS	California Ambient Air Quality Standards
CalARP	California Accidental Release Prevention
CalEEMod	California Emissions Estimator Model
CalEPA	California Environmental Protection Agency
Cal-OSHA	California Occupational Safety and Health Administration
Caltrans	California Department of Transportation
CAP	Climate Action Plan
CCAA	California Clean Air Act
CCR	California Code of Regulations
CDFW	California Department of Fish and Wildlife
CEQ	Council on Environmental Quality
CEQA	California Environmental Quality Act
CERCLA	Comprehensive Environmental Response, Compensation, and Liability Act
CESA	California Endangered Species Act
CFG	California Fish and Game
CFR	Code of Federal Regulations
CH <sub>4</sub>	methane
CHHSL	California Human Health Screening Level
City	City of La Mesa
CLUP	Comprehensive Land Use Plan
CMP	Congestion Management Program
CNDDDB	California Natural Diversity Database
CNEL	community noise equivalent level
CNPS	California Native Plant Society

## List of Acronyms and Abbreviations

---

CO	carbon monoxide
CO <sub>2</sub>	carbon dioxide
CO <sub>2</sub> e	carbon dioxide equivalent
CRHR	California Register of Historical Resources
CWA	Clean Water Act
dB	decibel
dBA	A-weighted decibel
DD	doubling of distance
DEH	Department of Environmental Health
DOT	Department of Transportation
DTSC	Department of Toxic Substances Control
EIR	Environmental Impact Report
ESA	Endangered Species Act (federal)
FAA	Federal Aviation Administration
FEMA	Federal Emergency Management Agency
FHWA	Federal Highway Administration
FIRM	Flood Insurance Rate Map
FTA	Federal Transit Administration
FOG	fats, oils, and grease
GHG	greenhouse gas
GIS	geographic information systems
GWP	global warming potential
HA	Hydrologic Area
HCP	Habitat Conservation Plan
HFC	hydrofluorocarbon
HIRT	Hazardous Incident Response Team
HMD	Hazardous Materials Division
Hz	hertz
I	Interstate
ITE	Institute of Transportation Engineers
JPA	joint powers agreement
LAFCO	Local Agency Formation Commission
L <sub>dn</sub>	day-night average sound level
L <sub>eq</sub>	equivalent noise level
LID	low-impact development
L <sub>max</sub>	maximum noise level
L <sub>min</sub>	minimum noise level
LOS	level of service
MACT	maximum available control technology

---

MBTA	Migratory Bird Treaty Act
mg/L	milligrams per liter
MMRP	Mitigation Monitoring and Reporting Program
MMT	million metric tons
MPO	Metropolitan Planning Organization
MSCP	Multiple Species Conservation Program
MTS	Metropolitan Transit System
MWMP	Medical Waste Management Program
N <sub>2</sub> O	nitrous oxide
NAAQS	National Ambient Air Quality Standards
NAHC	Native American Heritage Commission
NCCP	Natural Community Conservation Plan
NEPA	National Environmental Policy Act
NO <sub>2</sub>	nitrogen dioxide
NOP	Notice of Preparation
NO <sub>x</sub>	oxides of nitrogen
NPDES	National Pollutant Discharge Elimination System
NRHP	National Register of Historic Places
OSHA	Occupational Safety and Health Administration
PCB	polychlorinated biphenyl
PFC	perfluorocarbon
PM <sub>10</sub>	respirable particulate matter with a diameter of 10 micrometers or less
PM <sub>2.5</sub>	fine particulate matter with a diameter of 2.5 micrometers or less
ppm	parts per million
PRC	Public Resources Code
RAQS	Regional Air Quality Strategy
RCP	Regional Comprehensive Plan
RCRA	Resource Conservation and Recovery Act
ROG	reactive organic gas
RSL	Regional Screening Level
RTP	Regional Transportation Plan
RWQCB	Regional Water Quality Control Board
SAM	Site Assessment and Mitigation
SANDAG	San Diego Association of Governments
SANTEC	San Diego Traffic Engineers Council
SB	Senate Bill
SCS	Sustainable Communities Strategy
SDAB	San Diego Air Basin
SDAPCD	San Diego Air Pollution Control District

SDG&E	San Diego Gas & Electric
SF <sub>6</sub>	sulfur hexafluoride
SIP	State Implementation Plan
SO <sub>2</sub>	sulfur dioxide
SOI	Sphere of Influence
SR	State Route
SUSMP	Standard Urban Storm Water Mitigation Plan
SWPPP	Storm Water Pollution Prevention Plan
SWRCB	State Water Resources Control Board
TAC	toxic air contaminant
TDM	Transportation Demand Management
TDS	total dissolved solid
TIS	Traffic Impact Study
TMDL	Total Maximum Daily Load
USACE	U.S. Army Corps of Engineers
USC	U.S. Code
USEPA	U.S. Environmental Protection Agency
USFWS	U.S. Fish and Wildlife Service
UWMP	Urban Water Management Plan
VAP	Voluntary Assistance Program
VdB	vibration decibel
V/C	volume-to-capacity ratio
VMT	vehicle miles traveled
VOC	volatile organic compound
WDR	waste discharge requirement
WURMP	Watershed Urban Runoff Management Plan